

# ANNUAL REPORT

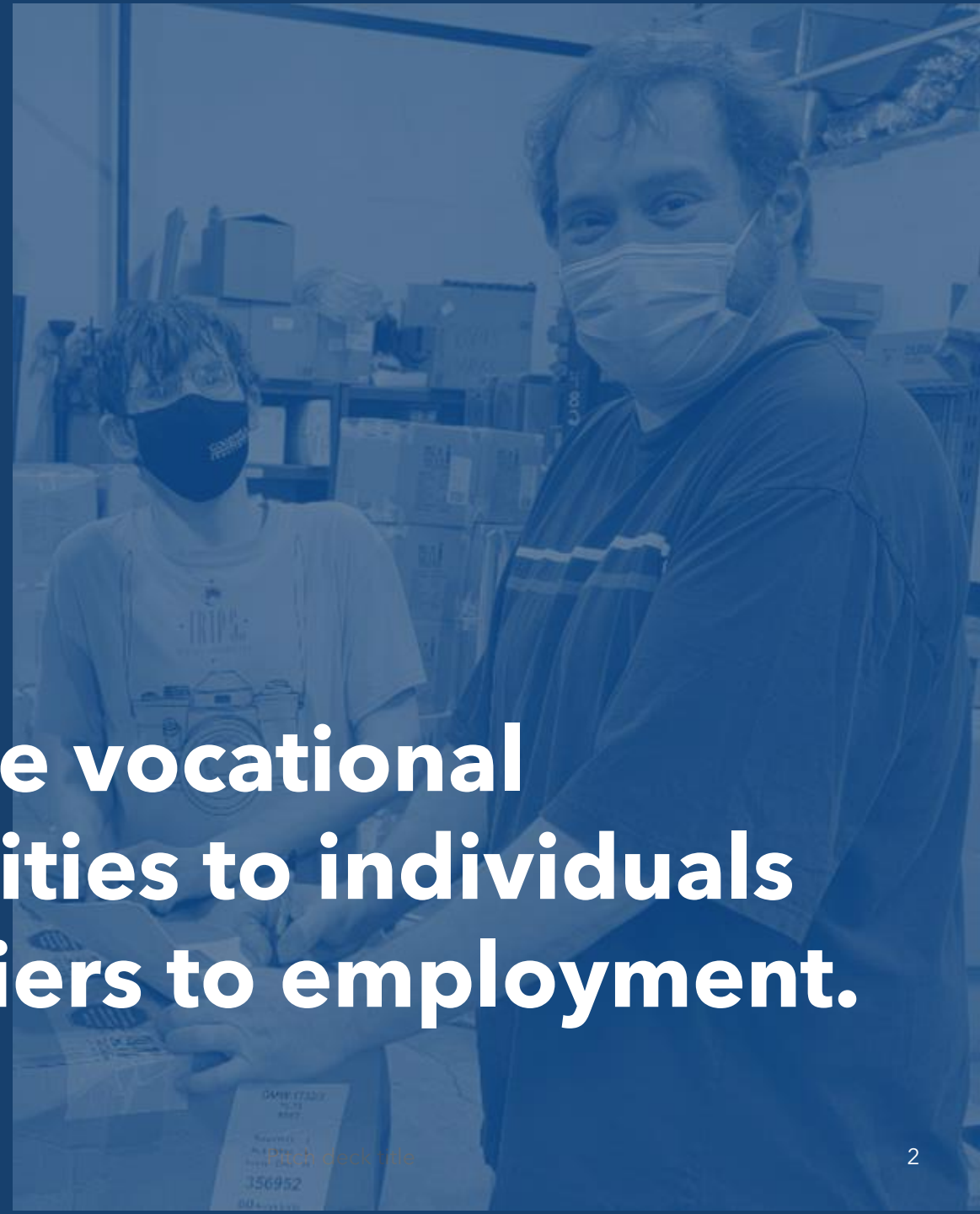
## 2022



GOODWILL  
INDUSTRIES

# MISSION STATEMENT

**To provide vocational opportunities to individuals with barriers to employment.**



# SERVICES

TOTAL NUMBER SERVED IN 2022

2,220 (DOES NOT INCLUDE EMPLOYEES)

**Individuals  
Served:**

**1,319**

## **JOB CONNECTIONS**

- Open to the public, Job Connections is a job search and referral program designed to help participants find a job in the community that fits their needs and abilities.
- Programs offered within Job Connections include the following Supplemental Nutrition Assistance Programs (SNAP):

### **Individuals Served**

- SNAP Employment and Training 687
- SNAP Outreach 210

## **PROSPERITY PROGRAM**

Provides financial wellness planning, banking and higher education assistance.

**126**

## **HOMELESS VETERANS' REINTEGRATION PROGRAM (HVRP)**

Offers job development, job preparation, retention, assessment and work adjustment to individuals.

**44**

## **OTHER SERVICES**

Tax Aide through AARP

**586**

# SERVICES

## **GOODWILL RETAIL TRAINING CENTERS**

Goodwill's Retail Training Centers provide opportunities for individuals to gain skills and learn more about work in an integrated and competitive environment.

**Individuals  
Served:**

**79**

## **DEPARTMENT OF HUMAN SERVICES (DHS) Self Sufficiency Supported Work and Florence JOBS**

Individuals gain positive work experience in a supportive environment and receive assistance with obtaining employment.

- Coos and Curry Counties 18
- Lane County 26
- Florence JOBS 35

## **I/DD Employment and Training**

Provides integrated, paid, on-the-job training and classroom activities designed to assist individuals with developmental disabilities gain skills and become more successful in a community job.

**88**

## **Vocational Rehabilitation Services**

Offers job development, job preparation, retention, assessment and work adjustment to individuals.

**17**

# SERVICES

## INDIVIDUALS SERVED

Unemployed/Dislocated Worker	1,013
Unknown or Unreported Barrier	859
Welfare Recipient	724
Offenders/Ex-Offenders (Justice Involved)	456
Homeless	416
Other Disadvantaging Condition	290
Older Workers	271
Working Poor/Incumbent Worker/Underemployed	185
Lack of GED/High School Equivalency	162
Psychiatric and/or Emotional Disability	116
Other Physical Disability	104

*An individual may be included in one or more of the above categories.*



# SERVICES

## INDIVIDUALS SERVED

Developmental Disability	46
Learning Disability	45
Non-English Speaking	41
Lack of Literacy	29
Neurological Disability	29
Other Disabling Condition	27
Autism	22
At-Risk Youth	17
Deafness or Other Hearing Impairment	13
Chemical Disability	12
Blindness or Other Visual Impairment	9

*An individual may be included in one or more of the above categories.*



# FINANCIALS

## What Our Community Provided to Goodwill

Community Training Sales	\$34,536,556
Donated Goods Inventory	\$9,504,608
Vocational Services	\$757,793
Other Income	\$949,550
Fundraising	\$279,533
<b>TOTAL</b>	<b>\$46,028,040</b>



# FINANCIALS

## What Goodwill Returned to Our Community

Wages	\$16,996,428
Payroll Taxes and Benefits	\$3,748,288
<b>TOTAL Payroll Expenses</b>	<b>\$20,744,716</b>
Occupancy (rent, utilities, insurance, etc.)	\$4,259,741
Investment in New Facilities & Equipment	\$4,471,145
Other Expenses	\$2,662,013
Supplies and Services	\$12,539,522
Telephone & Postage	\$276,007
Debt Service	\$1,074,896
<b>TOTAL</b>	<b>\$46,028,040</b>





# ETHICS POLICY

As a recipient of charitable contributions, Goodwill Industries of Lane and South Coast Counties and Goodwill Industries of Alaska (Goodwill) recognizes its responsibility to ensure that funds received are used to further its mission and to safeguard the assets of the corporation.

In order to uphold the highest standards and ensure the integrity, honesty and reputation of the entirety of the Goodwill Industries movement, we agree to voluntarily comply with the Code of Ethics and Accountability Policy.

Violations of this policy may be reported to Ethics Point by calling (866) 294-5563 or at [www.goodwill-oregon.org/EthicsPolicy](http://www.goodwill-oregon.org/EthicsPolicy).

# LEADERSHIP

## 2022 BOARD OF DIRECTORS

**Virginia Slate**  
Chair

**Kathleen Hynes**  
Secretary

**Dorlon Himber**  
Director

**Jim Gilroy**  
Director

**Debbie Jewett**  
Director

**Frank Talarico**  
Director

**Kevin McAndrews**  
Vice Chair

**Michael Lewis**  
Treasurer

**Elizabeth Bickford**  
Director

**Steve Fishback**  
Director

**Paul Kiese**  
Director



# LEADERSHIP

## 2022 GOODWILL EXECUTIVE STAFF

### **Jim Martin**

President and CEO

### **Kristy Langworthy**

Chief Financial Officer, Director of Workforce Development  
Chief Operations Officer, Alaska

### **Joy Medley**

Vice President of Retail Operations

### **Jim Nelson**

Director of Special Projects

# ACCREDITATION

CARF AND DHS

Goodwill Industries of Lane and South Coast Counties is accredited by the Commission on Accreditation of Rehabilitation Facilities (CARF) and the State of Oregon Department of Human Services.

